

RailOpt[®]



© Schweizerische Südostbahn AG

Planning and resource management for the railway industry

Qnamic *Intelligent
Resource
Management*

RailOpt® – the “Swiss Army knife” for resource planning.

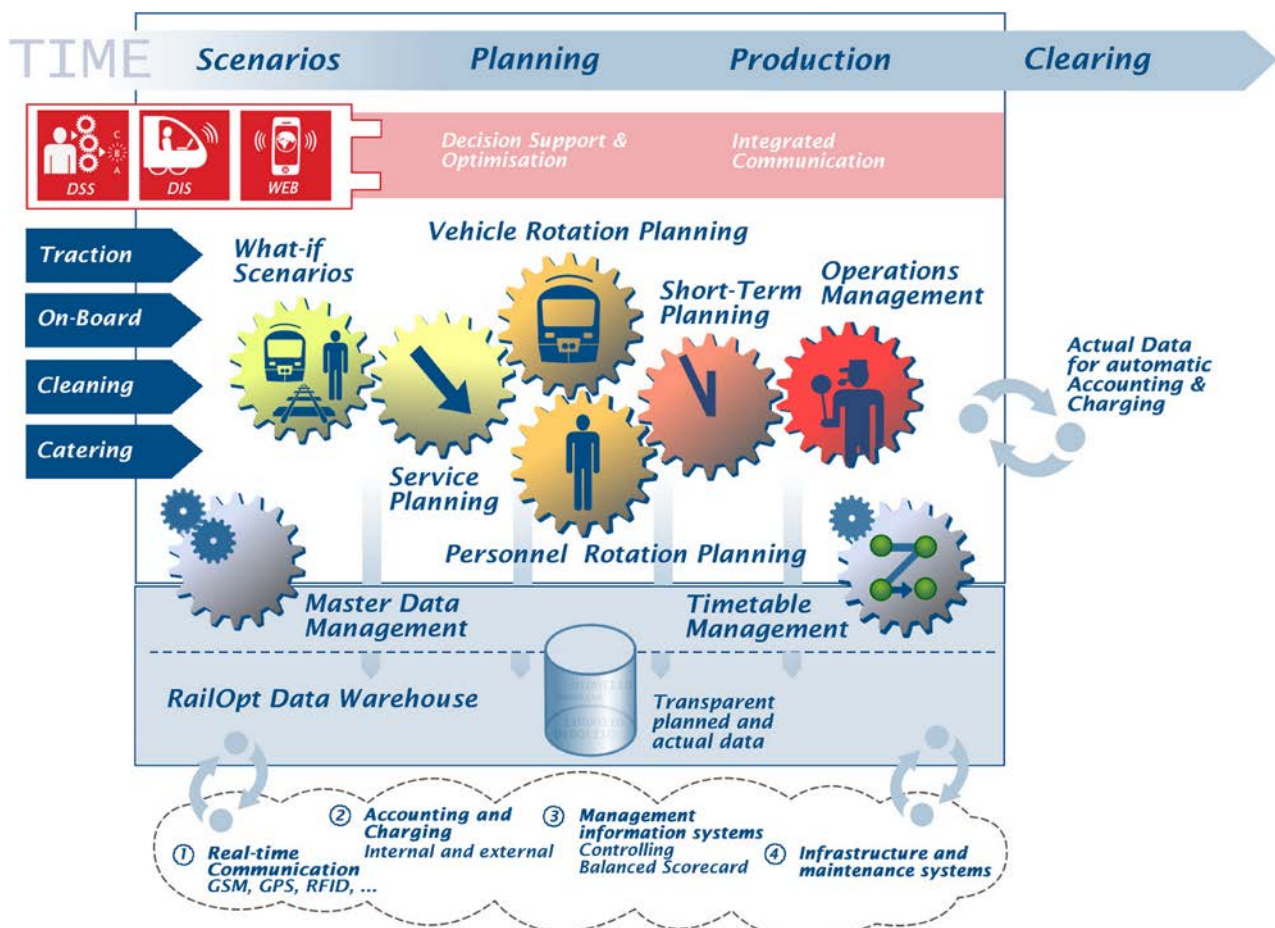
RailOpt® has been developed in collaboration with and particularly for railway companies. That is why we aim the clear structure of the user interface and the user-friendly application at the requirements and processes of daily business. **RailOpt®** perfectly supports planners and dispatchers with its sophisticated and railway-specific features.

RailOpt® stands for

- Resource planning newly defined, all-in planning, from simulation to dispatch for power supply companies
- Planning and implementation of infrastructure projects including all personnel qualifications

RailOpt® has stood the test in daily use by European railway companies for many years being the “Swiss Army Knife” for resource management and has helped running an intelligent resource planning, both in passenger transportation as well as the cargo industry.

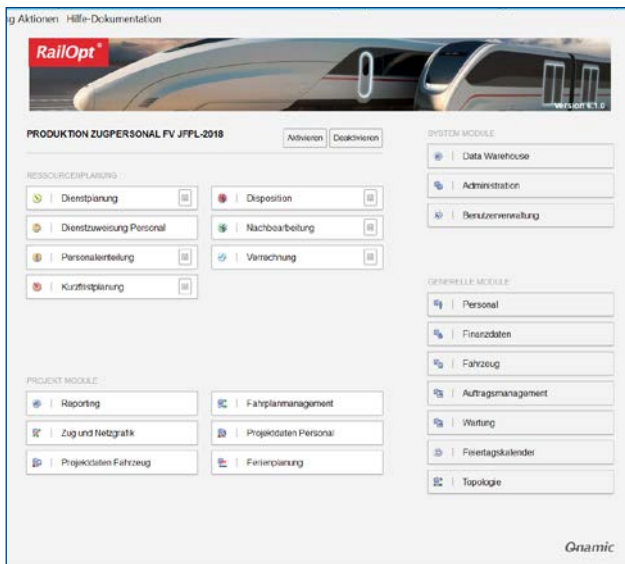
With **RailOpt®** all human resource and rolling stock capacities involved in the goods and services process are simultaneously dispatched. This is a unique way to take into account all reciprocal dependencies, such as qualifications and times for past and subsequent services.



RailOpt® represents a software with a well thought-out user interface and a planning board also designed for multiple use. You can integrate the planning and allocation of your rolling stock, personnel as well as your data in a transparent way.

User Interface and Planning Board

The user interface features a consistently sophisticated user experience. At the center of all planning and dispatching is the multiple-use and intuitive user interface. Extensive data requests and lists as well as individual views of the planning board and reports make sure that the user always has the complete scope of information and therefore the perfect overview of the resource management.

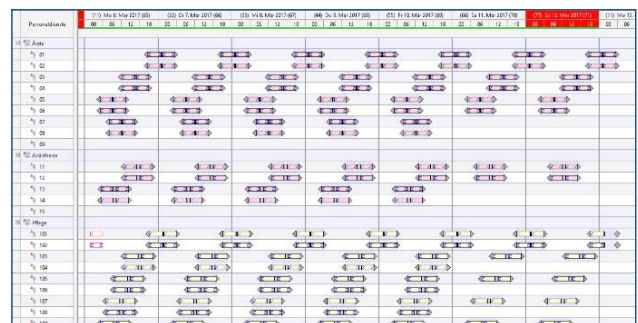


Planning and Dispatch of Rolling Stock

RailOpt® offers versatile support for the efficient and transparent planning of your rolling stock. The dispatcher always has full control over the state of his entire fleet thanks to features like vehicle change or delay alert.

Human Resource Planning and Allocation

The dispatcher is always on top of the situation and able to quickly find the right solution in case of disruption, thanks to such features as duty commencement lists, automatic administration of working hour accounts, extensive validation of working hours regulation, complete qualification management as well as integrated communication tools.



Your Data - Transparent and Integrated
RailOpt® provides detailed performance data of every planning step for all personnel and rolling stock, even through predefined gateways.

Of course, *RailOpt*® can communicate with the scheduling system of the railway network operator (e.g. TPN or SYFA). There is a standardized import of new scheduling data or the adjustment of trains already scheduled.

Qnamic supplies software and know-how for an intelligent resource management

Qnamic AG was founded in 2003 and is based in Hägendorf (CH). We develop software solutions for resource planning and allocation for railway, supply and other service companies. Through the integration of all participants our intelligent software solutions allow for the efficient planning, dispatch and controlling of resources.

Qnamic AG stands for

- functionality, usability and stability
- parametrization and configurability
- fast implementation (time to productivity)
- 24 h support service
- usability of technical information and online services (cloud/data migration)

Our software is an adaptable system combining work time regulations, qualifications, suitability etc. supplying economical aspects for controlling purposes in realtime.

Besides providing our software tools we can also take care of operations ensuring smooth running and availability. We are equally glad to support you during implementation. We also accompany the analysis and realisation of process optimizations. Along with the software administration we make longterm commitments and even take over planning and dispatching tasks.